

EQUIPOTENTIAL BONDING

DISTANCE HOLDER 133

Reference	Dimensions (mm)	Conductor range - Round	Conductor range - Tape	Material	Weight (gr)
AT-036K	280 x 35 x 8	∅ 8 - 10 mm / 50 - 70 mm ²	30 x 2 mm - 40 x 3,5 mm	Galvanized steel	200

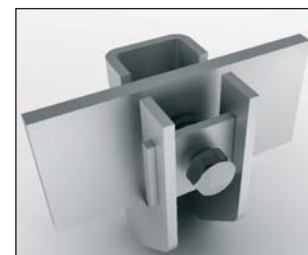
Allows to use the galvanized steel tape as a ground conductor at foundation level.



SUPPORT FOR TAPE CONDUCTORS 134

Reference	Dimensions (mm)	Conductor range - Round	Conductor range - Tape	Material	Weight (gr)
AT-033K	60 x 36 x 27	-	30 x 2 mm - 50 x 6 mm	Copper	120
AT-034K	60 x 36 x 27	-	30 x 2 mm - 50 x 6 mm	Galvanized steel	120
AT-035K	60 x 36 x 27	-	30 x 2 mm - 50 x 6 mm	Stainless steel	120
AT-039K	70 x 40 x 27	-	30 x 2 mm - 50 x 11 mm	Copper	120
AT-040K	70 x 40 x 27	-	30 x 2 mm - 50 x 11 mm	Galvanized steel	120
AT-041K	70 x 40 x 27	-	30 x 2 mm - 50 x 11 mm	Stainless steel	120

Allows to make an equipotential ring with tape conductor.



- AT-040K (GS) ●
- AT-039K (Cu) ●
- AT-041K (SS) ●

SPARK GAP FOR EARTH BONDING 135

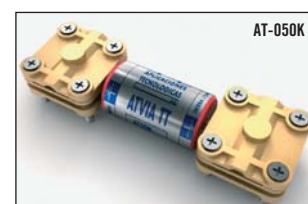
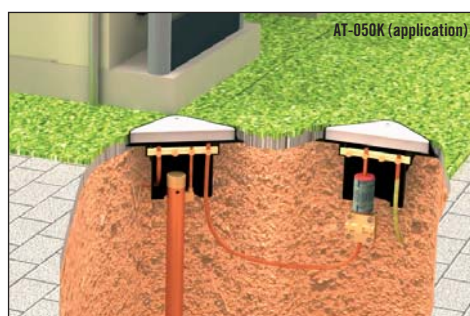
Reference	Dimensions (mm)	Conductor range - Round	Conductor range - Tape	Material	Weight (Kg)
AT-050K	216 x 57 x 38	∅ 8 - 10 mm (50 - 70 mm ²)	3 x (30 x 2 mm - 30 x 3,5 mm)	Naval brass (contact)	1

Meets EN 50164, UNE 21186, NFC 17102

In the lightning protection regulations it is recommended to join all earthings, the ones corresponding to the general network as well as the lightning protection earthing. In this way we avoid serious problems of resistance earth couplings.

However, on some occasions this connection can not be made, for example, because it would cause corrosion problems. In these cases the AT-050K is the most appropriate means of making the earthing connections.

In normal conditions, this protector keeps the earthings isolated, thus avoiding corrosion problems. When a discharge occurs and the voltage increases in the earthings, the spark gap will activate, directly joining the earthings and thus avoiding the current to pass from one to another through the equipments and internal installations.



INSTALLATION

For its installation, the protector has two joints AT-020F. It is recommended to make the installation in a specific earth pit.